

Using InterProject Dependencies

Overview

The most difficult aspect of program management is coordinating teams working on separately managed projects. Projects are frequently intertwined so that a portion of one project cannot begin or be continued unless a part of another project has been completed.

An InterProject Dependency (IPD) is a relationship between a key event in a *Controlling* project and another key event in a *Dependent* project. This relationship specifies that the Controlling key event must finish a certain number of days before the Dependent key event may begin.

Note: Only key events may be interconnected by IPD's. The end date of each project is always shown as a key event.

The **InterProject Dependencies View** shows all of these dependency documents in the repository sorted by project.

Creating an InterProject Dependency

Begin by clicking the Observations Navigator *create* item.

Controlling Event

Press the button labeled "Select Controlling Event." This will display a selection list showing the name of every project. Select the controlling project and press OK. Now you will be presented a list of the names of each key event in that project. Select the keyevent and press OK. The screen will display the project name, keyevent name and its currently planned completion date in the space below the button.

Delay

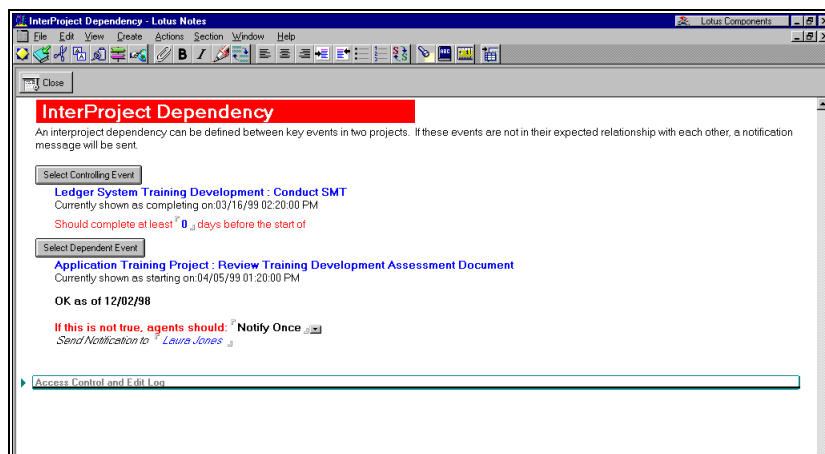
Enter the delay, if any, that should occur between the completion of the controlling event and the start of the dependent event in the field. The default value is 0 that indicates that the dependent event should occur immediately after the completion of the controlling event.

Dependent Event

Press the "Select Dependent Event" button. This will display the list of projects. . *You must choose a different project.* Select the dependent project and press OK. The system will display a list of the key events in

that project. Press OK. The new project name, event name, and the currently planned start date of that event will appear.

Just below the dependent event information, a status message will appear. This is the current status of the relationship. It will either display the words "OK", "NOT CURRENTLY TRUE", or an error indication.



Dependency Notification

The agents will periodically examine this dependency. When they determine that the dependency is NOT CURRENTLY TRUE, they will send an email to you or anyone you designate. The keyword selector gives you several choices: Once - send just one email the first time problem is noticed, Weekly - send an email once each week if the problem exists, As often as possible - send a message every time the agent runs. Never - Don't send any email.

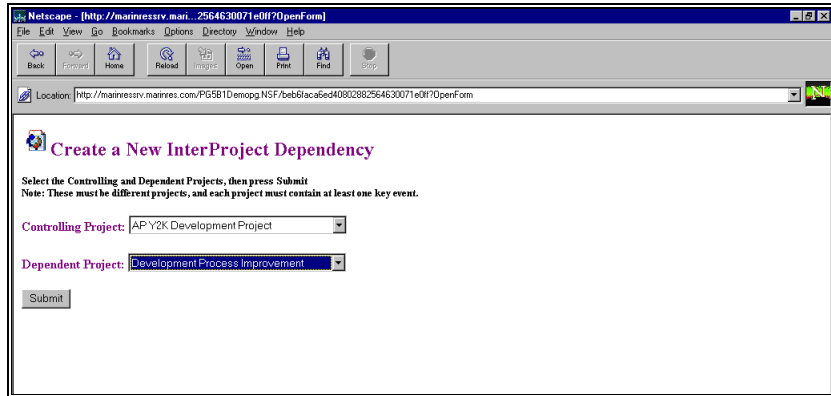
To setup the notification section

1. Press return to display the list of Notify times, pick one and OK.
2. Enter the mail address if it should be different from the one proposed.

Note: If the Dependent event is actually started, the IPD is ignored. It will not generate email and will not affect synchronization.

Creating Dependencies from a Web Browser

The primary difference is that when you select the "create" action from the navigator, a transactional form is displayed to let you specify the projects involved.



Submitting that form opens the dependency definition with the available selections for the project or calendar displayed in a dropdown list.

The InterProject Dependencies View

This view lists each dependency by dependent project. For each dependency, the current status is shown using the following columns.

DependentProject	Dependent Key Event	Controlling Project	Controlling Key Event	Lead	Sent	Notifying
AP Y2K Development Project	Specify forms changes	Ledger System Training Development	Archive Training Development Assessment Document	12d		Debbie Barnes
Application Install Plan	[project end]	APS Project	Sales Signoff	78d		Debbie Barnes
Application Training Project	Review Training Development Assessment Document	Ledger System Training Development	Conduct SMT			Laura Jones
	Review Training Development Assessment Document	AP Y2K Development Project	Recode year dependent sections			gary
APS Project	Release Phase Signoff	CMX Trial	Trial Samples Produced			Sam Jones
Development Process Improvement	Decision Point - Establish POLIC Development Strategy	Ledger System Training Development	Conduct SMT			gary@maintriv.com
Quick System Upgrade	Consulting Svcs Release Testing	CMX Trial	Trial Samples Produced			Laura Jones
Sales Transaction Inquiry System	Release Phase Signoff	Ledger System Training Development	Review Training Development Assessment Document			Laura Jones
	Create Functional Spec	Ledger System Training Development	Conduct SMT			gary
Y2K Update for GL Journal Transfer	Quality Assurance Review	AP Y2K Development Project	Recode year dependent sections			Bill Web

Dependent Project

This is the name of the dependent project in alphabetical order. It is an expandable category. All dependencies that affect this project will be listed together.

Status Indicator (color ball)

Red indicates a problem (dependency is not valid)

Green indicates that the dependency is valid.

No indicator means that the dependency no longer is relevant. Either one of the projects or events has been deleted from the observatory, or the dependent event has already started.

Dependent Key Event

This column lists the name of the milestone or key event in the dependent project.

Controlling Project

This column lists the name of the controlling project for this event.

Controlling Event

This column lists the name of the key event or milestone in the controlling project.

Lead

This shows the number of days required between the controlling and dependent events.

Sent

This shows an icon about the status of notification on this event.

padlock - This indicates that the "Notify When" option is set to none so that no mail will ever be sent.

letter icon with checkmark - This indicates that an email has been sent.

letter icon red x - This indicates that the system attempted to send an email, but there was an error sending the message. Usually this means an incorrect email address.

Notifying

This is the email address to which the notification message will be sent.