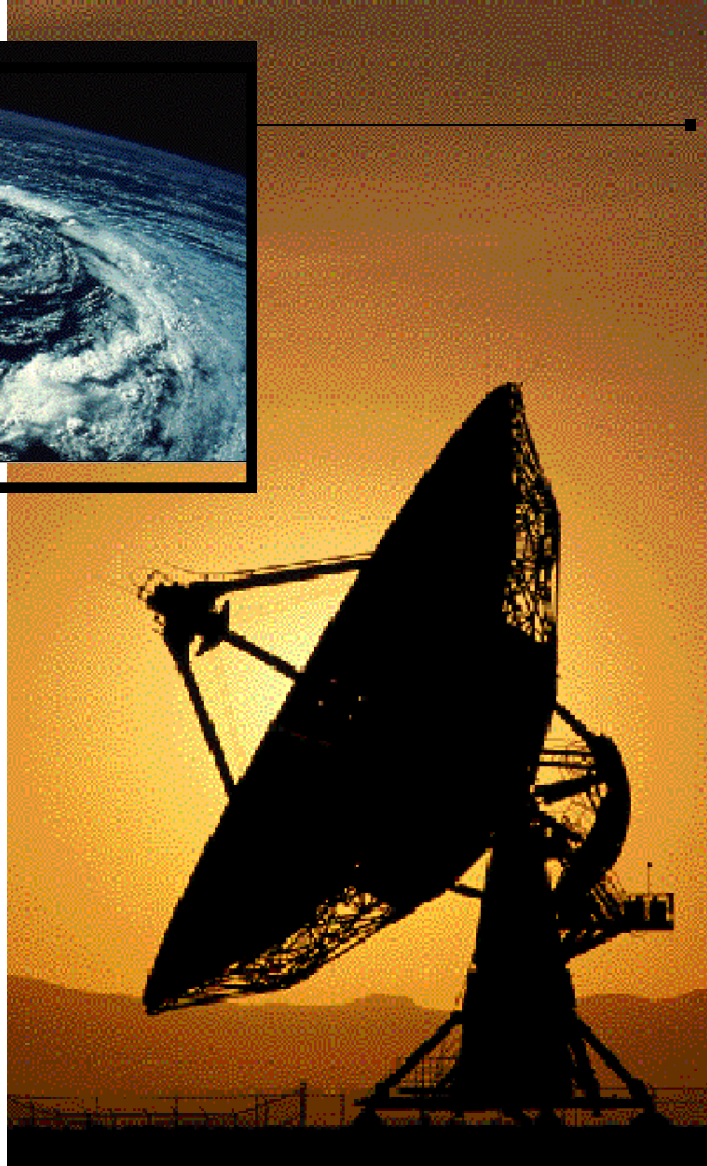
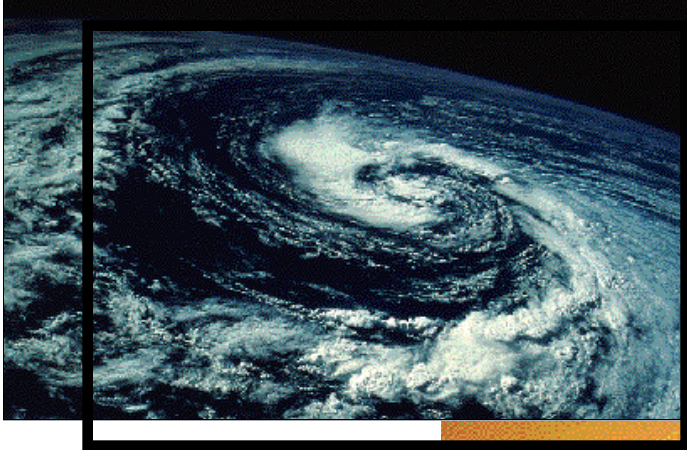
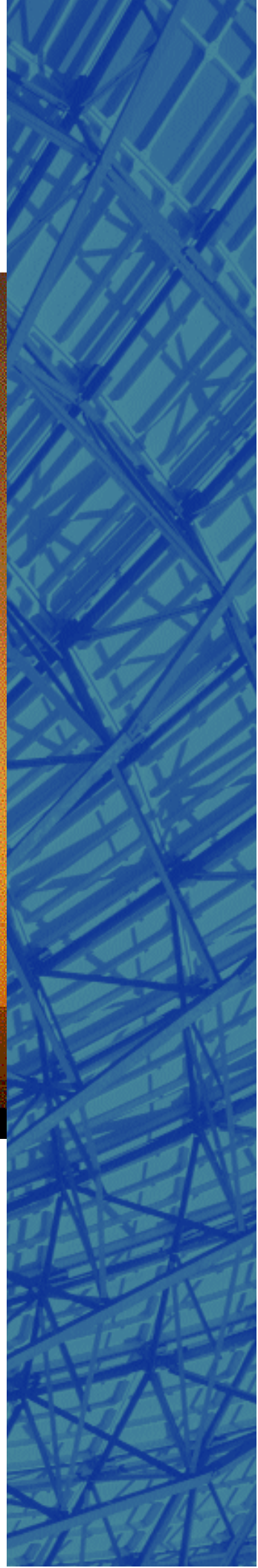


project
observatory



M A R I N
RESEARCH

Connecting
Your Project
Community



Do you know about all the projects that are underway in your organization?

Do you know if you have the right resources in the right places to accomplish your projects?

Do you know which projects, programs and departments need your attention now?

**WITH PROJECT OBSERVATORY™
YOU WILL KNOW .**

Project Observatory provides executives with a comprehensive world view of ongoing projects and commitments without the need to retrain, retool or change your corporate project culture.

Based on a simple – yet very powerful – process we call Project Telemetry™, this system captures project status and commitment details across your entire global organization. It then delivers well-organized, consistent data to executives with quick-scan dashboards, in-depth reports, and meaningful graphics.

In a world of unrelenting change, senior executives need the straightforward, real-world perspective that Project Observatory provides to make good project decisions and avoid continual crises.

P R O J E C T O B S E R V A T O R Y

TAKE A GLOBAL VIEW

The Project Observatory system provides a management-level picture of projects and commitments that can encompass the largest global enterprises.

WHERE DOES PROJECT OBSERVATORY MAKE SENSE?

Research-Based Organizations

Scientists, engineers and educators don't want to be burdened with complicated project planning tools. However, administrators need visibility to evolving status and resource requirements. Project Observatory is a highly practical solution for these organizations.

Consulting Organizations

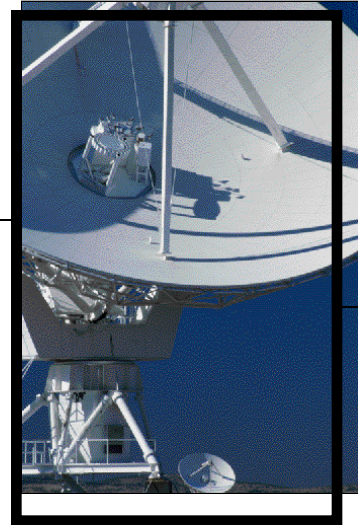
When you are running projects in customer locations and trying to balance resource requirements across the continent, it's very difficult to maintain a comprehensive view of work in progress. With Project Observatory, you can get that understanding with simple email-based reporting. Proprietary client information never has to leave the job site.

Large IS Organizations

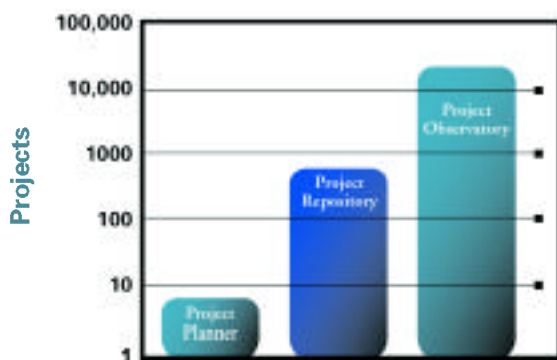
When the need for comprehensive project and resource information is acute, Project Observatory can be implemented quickly without requiring you to change your project culture. And it can deal with widely varying levels of process maturity and a mix of in-place techniques.

Marketing Organizations

Simplified planning and reporting procedures – plus the ability to update reports at any time from remote locations – make this a practical tool for coordinating large product-marketing teams executing worldwide product introductions, campaigns and training programs.



EXPAND YOUR MANAGEMENT HORIZON



A Project Planners, or desktop planning tools, can be used to combine a small number of carefully constructed plans to help a dedicated team work more effectively.

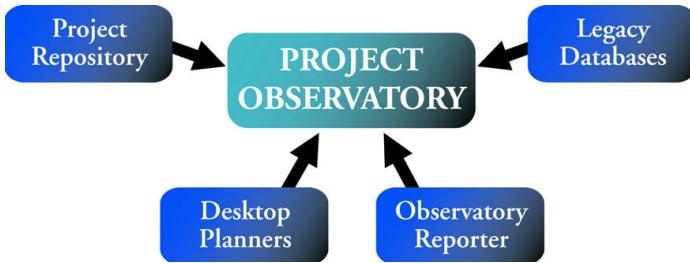
B Project Repositories provide the structure and group involvement to support department-sized collections of projects by maintaining all the task-level details to support day-to-day operations.

C Project Observatory tracks whole projects and department-level commitments rather than individual tasks. By doing so, it can track thousands of projects and hundreds of departments to provide a true enterprise view. In addition, it can directly integrate information managed by independent planners and department repositories worldwide.



REMOVE THE BARRIERS TO PROJECT INFORMATION

Project Telemetry is a process that uses XML technology to combine written and statistical project status information into a compact, machine-readable report we call a "project abstract." These abstracts are sent by email to an active observatory database which maintains project-, program- and organization-level status and resource commitments.



For organizations where desktop scheduling tools or project repositories are in use, automated agents and scripts can extract the appropriate project and resource details; they can then format and send the project abstracts to the observatory with little or no additional effort. The flexible abstract format takes advantage of the rich information available from such sources.

Sources of Project Abstracts

Unlike conventional project management techniques, you do not need to prepare a detailed work plan or Gantt chart schedule for every project. The project time line is communicated in the simplest way possible; by listing upcoming milestones or checkpoints expected for the project. Resource needs are conveyed at the department level, and they can be specified as simply as "2 people till the end of the project," or in great detail.

This minimalist reporting style makes Project Observatory practical in such applications as research, marketing and maintenance. Weekly reports can be prepared by project leaders or their assistants in just a few minutes using Observatory Reporter™ and other form-based interfaces.

Because the project abstract format is based upon the public XML standard, customers can also easily connect existing proprietary data sources to the observatory.

P R O J E C T A B S T R A C T



WHAT MANAGERS NEED TO KNOW

A project abstract contains several basic sections, each with a number of optional parameters. These sections are combined in an XML wrapper and transmitted as a single message to the observatory. The abstract format itself is extensible to accommodate specific customer needs and many years of product evolution.

Identification – This contains the project name, manager, sponsor, location, etc.

Status – This is a written statement about the current project situation.

Milestones – This is a simple table of key events and expected dates in the project.

Statistics – This section allows you to provide some or all of a large set of standardized project parameters, such as projected finish dates, work remaining, cost, baseline values, etc.

Issues – This is a collection of short summaries of the current open issues and risks in the project.

Commitments – This is a table of resource requirements vs. time for the departments working on the project.



KNOWLEDGE CENTRAL FOR YOUR PROJECT UNIVERSE

The observatory is a secure database that can be accessed by authorized users from a Web browser or Notes Client. It provides an executive-level display of project and program status and organization commitments. The open observatory design allows integration with existing systems.

Title	Time	Effort	Project	Issues	Enddate	Events	Issues
...GLOBAL					11/16/2007	23/78	26/40
...CLINICAL TRIALS					02/25/2008	5/18	16/13
...PHASE I TRIALS					02/26/2007	8/6	2/3
...REGULATORY PROCESS SUPPORT					04/14/2008	9/4	2/3
...RESEARCH INITIATIVES					08/29/2008	1/6	6/9
...SYSTEMS DEVELOPMENT					11/16/2007	17/44	14/25



Information is arranged in program and organization hierarchies. The summary elements of each are defined by the observatory owner. The detailed elements, projects and project commitments are created from project abstracts and are associated with summary items by administrative tables.

Database agents process new project abstracts and update reports. A series of dashboards displays color-coded status indicators and summary statistics. These let you view problems at a glance.

Clicking on a dashboard item opens a report showing current and historical statistics and commitments. Projects display the written status, milestones and issues reported by the project manager. Related reports are linked for quick browsing. An interactive viewer in the report form displays a variety of charts to provide insight into trends and requirements.

Historical Data The observatory makes trends visible by automatically taking a snapshot of your report statistics each week and providing graphical presentations of the trends. This lets you see how key variables, such as effort at completion, have changed over time.

Forecasting An automated agent reviews key trends to alert you proactively to projects and organizations that may need increased attention.

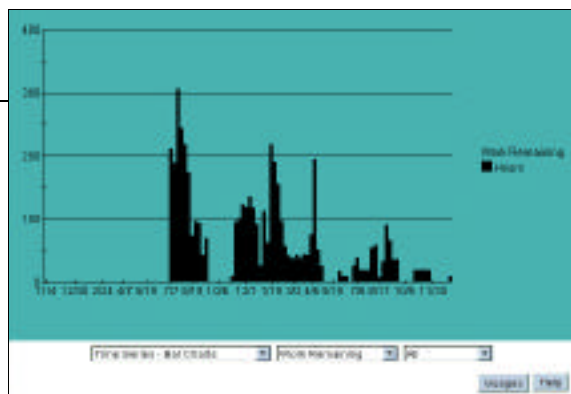
Cross-Project Coordination Program managers can specify schedule dependencies among projects and receive automatic notification when projects get "out of sync" with one another.

Gantt Charts High-level, program and organization Gantt charts are produced automatically.

Security Access to any report can be restricted to specific individuals.

Observatory Explorer™ is a Java-based graphical viewer that can display a variety of charts for each project, program and organization.

- Histograms show actual, forecasted and baseline work vs. capacity assumptions.
- Trend charts present key statistics.
- Forecast charts extrapolate trends to future dates.
- Distribution charts show effort allocation by subgroups and projects.
- Ranking charts show "top" contributors to demand.





USING PROJECT OBSERVATORY WITH PROJECT GATEWAY™

Project Gateway repository systems are tactical workplaces that allow teams to deal with the myriad of day-to-day, task-level details involved in getting projects done.

Project Observatory, on the other hand, focuses on projects as a whole and the aggregate demands they place on the organizations supporting them. The hundreds of records that comprise a repository project are condensed into just a handful of project-level records in the observatory.

These are highly complementary systems that can be used together very effectively.

Integrate Multiple Repositories Project Observatory can function as an integration layer that allows any number of Project Gateway repositories to be consolidated into a single management dashboard showing all projects and all departments.

This consolidation is completely automated. No new manual reporting is required, yet all of the details managed in all of your Project Gateway repositories are consolidated into the big picture provided by the observatory.

Extend Reporting Project Observatory can operate as a companion application that supplements the Project Gateway repository with historical data capture, graphical trend analysis and a more detailed resource demand and capacity picture.

Projects can also be reported directly to the observatory that would not be appropriate for inclusion in the repository.

SYSTEM REQUIREMENTS

Project Observatory Server – Lotus Domino® server software version 4.6.1 or later. Communications requirement: Infrastructure must allow email with text attachments to move from data source to observatory server.

Project Observatory Client – Lotus Notes® 4.6.2 or later, Microsoft Internet Explorer® 4.01 or later, Netscape Communicator® 4 or later. If Java visualization tools are not required, then earlier model clients can be used.

Marin Repository/Observatory Link – Supports all existing Project Gateway repositories. Works on all Domino 4.5 or later servers.

Observatory Reporter Application – Notes 4.5 client or later on PC, Mac or Sun Workstation.



For information on links to other datasources please see our web site.

M A R I N
R E S E A R C H

100 Larkspur Landing, Suite 220

Larkspur, California 94939

415.461.9784 fax 461.9788

www.marinres.com

info@marinres.com

Project Observatory, Project Gateway, Project Telemetry, Observatory Reporter and Observatory Explorer are trademarks of Marin Research. ©1998 Marin Research.