

Installing the Project Gateway Publishing Software

Overview

Most users of a Project Gateway Repository System will interact only with the Notes database or Domino Website. They do not need to install any additional software on their desktop and can ignore the contents of this manual.

Project managers and administrators who will be responsible for publishing and maintaining project schedules which are developed using traditional desktop project scheduling applications such as Microsoft Project, Primavera, ABT Workbench will need to install Project Gateway publishing software on their workstation. They should become familiar with the contents of this manual and the Repository User's Manual.

There are two sets of software provided for publishing. The Project Gateway Tools for Notes Clients, and the ProjectWeb Publisher for Web Clients.

The Project Gateway Tools

These components install into Notes Clients 4.5 and above including Notes 5 clients. These tools allow Project Managers with Notes clients to easily publish and synchronize their plans with the Project Gateway Repository on their server.

Microsoft Project Macros Installation

When you will be using Microsoft Project with Project Gateway, you should first install appropriate publishing tools and verify their operation. Then follow the instructions found in the chapters entitled "Using Microsoft Project 2000" or "Using Microsoft Project 98" for the installation and use of the Project Gateway macros.

The ProjectWeb Publisher

Is a Windows application that works as a companion to you web browser to prepare project information for upload to the repository and to synchronize changes.

This software is described in the chapter "Using ProjectWeb Publisher." The Domino server must be specially configured to support the use of Projectweb publisher. Unless you know that this service is provided on your site, do not attempt to use these tools.

Publishing and synchronizing using a Notes client is easier than publishing with a web client, so whenever possible, Project Managers should have Notes Clients installed.

Legacy support

We have removed instructions for some systems, including Repository Schedules, Timeline, Open Plan, and earlier versions of Microsoft Project from this documentation because these systems are no longer in general use. Documentation for these is still available on our web site and the required software components are still included in the release packages.

Support for 16 bit operation (Windows 3.1/Notes 3) is no longer provided.

Licensing Requirements

Use of the Project Gateway publishing functions and databases generated by Project Gateway is licensed on a per user basis. A Project Gateway user license is required for each person who is given reader access or above to any of the repository databases. No additional license is required to use any of the project publishing tools.

If you are unsure of your contracted licensing level, please check with your software licensing administrator or Marin Research, Inc.

Software labeled "For Evaluation Use" is intended solely for your evaluation and not for any production use without written permission from Marin Research.

Operating Requirements

Project Gateway Tools

RAM: 32 MB.

REQUIRED SOFTWARE: Windows 95, 98, NT, 2000 or XP Operating system with Notes 4 or Notes 5 Client Software.

SERVER: Any Domino server running the Project Gateway 5 application databases.

Project Web Publisher

RAM: 32MB.

REQUIRED SOFTWARE: ProjectWeb Publisher requires a Windows 95, 98, 2000, NT or XP platform with Netscape 4 or later or IE 4 or later.

SERVER: The Domino server must be on a Windows NT or Windows 2000 platform and must be configured to support Web publishing operation.

Project Gateway Tools for Notes Clients - Installation Procedure

The installation files for the Project Gateway tools may have been provided to you on the distribution CD in the "\PGTOOLS" subdirectory or via web download.

Ensure that Notes is not running before beginning this procedure.

Within this subdirectory run the PGT510.EXE program. The version is part of the name, so that you may find a later version such as PGT511.EXE or PGT510A.EXE instead.

During this process you will select an installation directory for the software and will need to verify the location of your Notes.INI file. If you have multiple versions of Notes on your system, it is best to determine the location of the Notes.INI file before you begin.

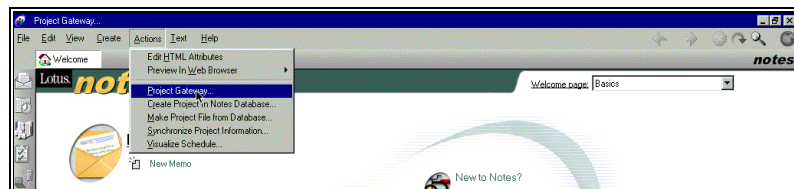
When complete, review the verification procedure below.

If you are going to be using Microsoft Project, you must install the appropriate macros before you can use the tools. Do not do this until you have verified the successful installation of the tools as shown below.

Follow the instructions found in the chapter entitled "Using Microsoft Project 2000" or "Using Microsoft Project 98" to install and verify the macros.

Verifying Installation the Project Gateway Tools

Launch the Lotus Notes application. Select "Actions." At the bottom of the menu you should see new commands added for Project Gateway. Select the "Project Gateway..." command. The About dialog will appear showing the version and your registration information. Press OK to exit this dialog.



Notes Installation Problems

If the **Project Gateway... command does not appear on the Actions menu**, then the problem is that the wrong NOTES.INI file was selected during the installation process. Sometimes there are several NOTES.INI files located in different directories.

To find the correct NOTES.INI file:

1. Exit Notes.
2. Search your hard drive, and network drives, for files named "NOTES.INI".
3. The file with the most recent date will be the correct one.
4. Reinstall Project Gateway, selecting this file rather than the one which was automatically located by the setup program.

If error messages appear during loading of Notes saying that PMT32.DLL, GSW.DLL or GSW32.DLL could not be found, the problem is a path problem. Modify your PATH statement in your AUTOEXEC.BAT file to include the directory in which you installed Project Gateway. Then reboot your system so that the new Path settings can take effect.

Uninstalling the Project Gateway Tools

To uninstall automatically:

To remove Project Gateway from your system rerun the install procedure. Select the uninstall option to remove the Project Gateway components from the places they were originally placed by the install program.

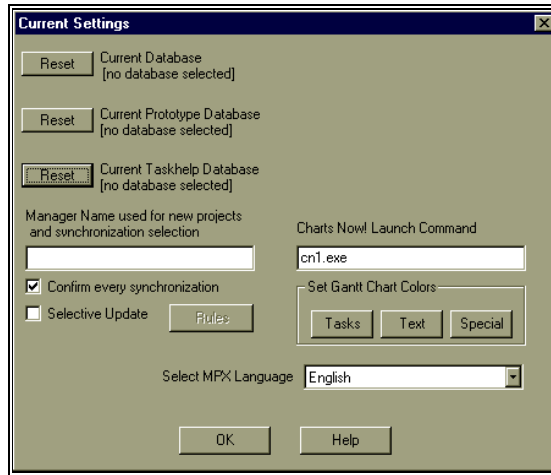
To uninstall manually:

1. Edit your NOTES.INI file to remove the AddInMenus=PMT32.DLL command line. If this is the only file listed on this line, remove the entire line, if you have several addin functions, remove only the reference to PMT32.DLL.
2. Open the MarinPMG.ini file and examine the section entitled [FileList]. This tells you the name and location of each file installed by Project Gateway. You may remove these files.

Project Gateway About Box and Setting Dialog

The Project Gateway... command displays the About Box. On this dialog is a *Settings* Button that displays the Current Settings dialog.

The Project Gateway... About box displays the current version and registered user name. It also provides access to the on-line help file and to the Settings dialog.



In this dialog the Current Database, Current Prototype, and Current Taskhelp Databases are displayed. Next to each is a Reset Button. Pressing Reset causes the software to "forget" the associated database selection. The next time one of these databases is needed as a parameter to a Project Gateway command, a message will be displayed to tell you that the previous selection is not valid and that you must make a new selection.

This feature is provided for the situation in which the database being remembered is no longer accessible, perhaps because it is located on a dial in server. If the prototype, for example, was last used on such a server, the system will try to access it whenever Create is used. For these situations, you could use the Reset functions.

Selective Update checkbox and Rules button

This checkbox enables the Selective Update feature, described in the chapter "Synchronizing..." to accelerate the process of updating the Repository when changes are made in a project plan. When the checkbox is checked, the Rules button appears to let you customize the selection process. Checking this option can improve synchronization performance in large databases.

Confirm Every Synchronization Checkbox

When set, the system pauses during the Update Notes and Update Project processes after the SYNC.TXT report is written but before any changes have been made to the Notes database or Project File. When paused, it displays a Continue - Yes/No message box. If you press No at this point, nothing will have been changed, but you can see what would have been changed by examining the SYNC.TXT file.

Manager Name Field

The Manager Name field is used for two related purposes.

When Creating a project, whether in a new or existing database, the PMName field (labeled "Sponsor") in the Project Profile document being created will be set to the text found in this field. That means that every project you create will have your "Manager" name preset.

When the Update Notes or Update Project dialogs are displayed, and the Database Project List is dropped down for selection, only those projects which have this text in their Manager fields, or which have an empty Manager field will be displayed. All projects with other manager names will be excluded from the list. As another indication, the Manager name will be displayed at the lower right bottom of the "Database Project List" field after a selection is made. This limits the list of projects that you can synchronize to those which you are managing to avoid accidentally selecting someone else's work.

Note: If you want to be able to synchronize to any project in the any database, clear this field, OK the dialog, and then select the Synchronize command.

Charts Now! Launch Command

The Charts Now! Launch Command is shown in an editable field at the bottom of this dialog. This was preset when Project Gateway was installed. You would only need to change this if you moved Charts Now! to a different directory or installed another version on the system.

Note that Charts Now! is included only for backward compatibility with previous releases.

Chart Color Buttons

These buttons select the three colors used with the Charts Now! application. When you press one of these buttons, the standard Choose Color dialog is displayed with the color cursor preset onto the current color. The special color is used only for completed key events on the multiproject summary chart.

Select MPX Language

If you are using a localized version of Microsoft Project 98, set the language here so that the system will properly interpret your files.