

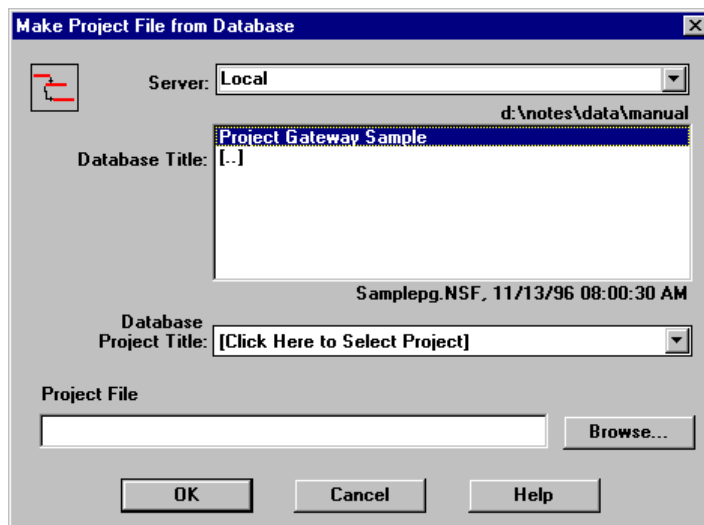
Extracting Projects

The Make Project File From Database Command

This command will create a Microsoft Project 98 or 2000 project plan from a project stored in a Project Gateway database. Projects that are manually composed in Notes can be exported this way as well as those that have been imported from PM systems. This is an infrequently used function which not part of the normal publish/synchronize process.

Microsoft Project 2000 users have "Make" toolbar button that does the entire Make process. They should use that function rather than the dialogs shown in this chapter.

The generated project model will contains some information that is not displayed in the assignment documents including summary tasks, resource calendars, cost rates and other data of use to the planning applications.



Limitations

Make Project File is only supported for a few specific file types. When transferring between project types, some of the nuances of the individual

planning systems will be lost and you may not get the exact same schedules from system to system.

Make Project File Dialog

Selecting this command displays the Make Project File dialog box as shown on the previous page.

In this dialog you must select a Notes database using the Server and Database list boxes (select Server first). Then, select an existing or new project file by pressing the Browse button. The file extension of the project file will determine the format of the information. Enter or select .MPX or .M2K to create a Microsoft Project compatible file.

Note: If your server name does not appear in the dropdown list, you may enter it manually in the Server field.

Since Project Gateway databases can contain more than one project, the “Database Project Name” field allows you to choose which project is to be exported. The field displays the “Click Here...” prompt. When you click it, a drop list will appear showing the names of all projects in the database. Click on the desired project title to select it.

After selecting the database, press OK. If the project file already exists, you will get a confirmation prompt to make sure you want to replace it. If you answer No at the confirmation, you will return to the dialog. At that point you can press Browse or edit the name field to change the file name.

If you have not already selected a project in the database, the Database Project Title field will dropdown. You must select a project before proceeding. However, if there is only one project in the database, the system will automatically select it for you.

After the project file is checked, the processing will begin.

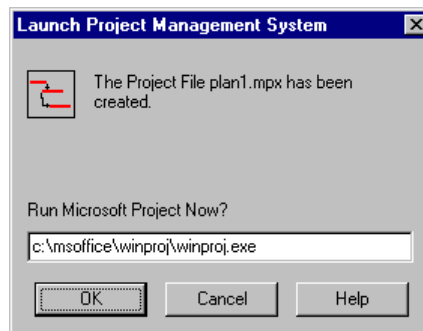
Make Project File: Sequence of Processing

1. The database is opened and the Field Map is retrieved. This is used to define where data in the assignment notes is placed in the project file.
2. The Project Profile document is located, the .CPF file is detached and read to reconstruct the original project model in memory.
3. All assignment documents that belong to the selected project are read. Using the Field Map, the appropriate data is transferred to the project. At this time, any assignments that have been composed by the Notes users will have project tasks created for them. New project resources will also be created if necessary.
4. The updated project is translated into the format of the target project management application and a new file is created. For

some project types, a helper application, "Project Gateway Transfer" is invoked by Project Gateway to perform the actual data transfer. It will appear briefly at the bottom of the screen on the Toolbar or as a minimized icon. It will disappear when the project information has been read.

Legacy Note: In the case of Time Line 6.0 some additional information is required for which a dialog will appear. Also, because Time Line 6.0 uses a multi-project SQL database, if an existing database is specified the project will be added to the database rather than replacing it.

When completed successfully, the Launch dialog will appear so that you can immediately use the plan.



The Launch dialog interprets the file extension to specify the project management application. In the field below it shows the command used for launching the application.

Please make sure the application is not currently running, then press OK. This will launch the application with the file just created. Or press Cancel now. You can load the application at a later time and select the project file using the File Open or equivalent command.

When first installed, Project Gateway assumes the "standard" installation directory for each system. These may not be correct for your system. If for example, you use Microsoft Project and have placed it in the C:\WINPROJ directory, click on the command field and edit it to show C:\WINPROJ\WINPROJ.EXE. Once you modify these line and launch the application the first time, Project Gateway will remember the new setting for all future uses.

For files generated in .M2K format (Microsoft Project 2000, 2002, XP), the launch process is more complicated. In this case, project is launched and instructed to load a "helper" document PGLOAD.MPP. This document contains macros that will initiate the loading of the .M2K File. The result will be that the project is created within Microsoft project.

The project must be recalculated after it is loaded by the project scheduler and must be saved after recalculation before being used with any other application (including Project Gateway).

Problems When Launching The Project Management Application

- File Not Found errors. This is caused by an incorrect launch command. Ignore the error, select the application and load the file directly. The next time you launch the application, make sure the project management program is really in the directory you have specified and correct the command before pressing OK. The revised command will be retained.
- Cannot Launch errors. The application is already running. Ignore the error, select the application and load the file directly.
- The application launches, but then encounters some fatal error. This may be due to running out of memory, resources, etc. Reload Windows, launch the application manually and open the file.
- The application launches and loads the file but gives errors during recalculation. This will happen when tasks have been executed out of the planned sequence, during workhours not included in the resources calendar, etc. These same problems would occur if the same actual data was entered manually into the project scheduler. Follow the instructions of your application to resolve them.

Make Project Versus Synchronize Project

Synchronize will modify an existing project file with actual data such as actual start and percentage complete. This is equivalent to typing in the actual data while leaving everything else undisturbed. If you are running the project, you will want to use Synchronize Project to get updated actuals while maintaining your views and report definitions, outline structure and other details.

Make Project will create a whole new plan from the stored data using the calendars and options settings (where appropriate) found in the project plan from which the database was derived. This will be similar to, but not identical to the original plan, so it is not a substitute for synchronization.